

MARINES' MEMORIAL CLUB & HOTEL SAN FRANCISCO

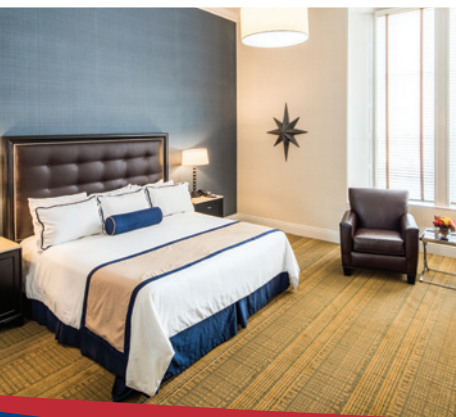
609 Sutter Street, San Francisco, CA 94102

Club Main: 415.673.6672 · Fax: 415.441.3649

Sales: 415.441.8562 · Fax: 415.441.0229

Toll Free: 1.800.562.7463 · www.MarinesMemorial.org

Email: Sales@MarineClub.com



LOCATION

Consider San Francisco's elegant Marines' Memorial Club & Hotel for your next meeting or special event. Housed in an historic 1920s California Spanish Revival building next to Union Square, the Marines' Memorial retains the character and charm of old San Francisco. Cable cars, restaurants, Chinatown, entertainment venues and art galleries are steps away from the Marines' Memorial. The Westfield Shopping Center, Moscone Convention Center, Metreon and SFMOMA are a short walk away.

ACCOMMODATIONS

The Club features 138 tastefully renovated guestrooms including 13 suites, a rooftop restaurant and steakhouse, on site health club, the 564-seat Marines' Memorial Theatre, a library and museum. When you arrive, you will sense a spirit of welcome that will remain with you throughout your stay, thanks to an extraordinary team of employees, many of whom have been with the Club for decades.

AMENITIES

All renovated guestrooms and suites offer individually controlled heating/AC, plush robes, coffee/coffee makers, complimentary Wi-Fi and HSIA, daily newspaper, wall safes, irons/boards, digital radios with MP3 docking, Comcast with over 60 channels, flat screen HDTVs, and luxury bathroom amenities. There is no charge for local calls and there is a business center which is accessible 24/7 at no charge to Club guests. Guests also enjoy complimentary entry to the health club with indoor deepwater lap pool and state of the art equipment.

CONFERENCE, THEATRE & BANQUET SPACE

Whether hosting a small business meeting, a keynote for 500 people, or a grand reception and banquet, the Marines' Memorial Club & Hotel and the Marines' Memorial Theatre provide exceptional meeting and banquet space. All space is fully equipped to ensure the success of your gathering with built-in sound system, Internet connectivity, and a skilled staff to execute all the details of your event. The Marines' Memorial Club provides full service catering, banquet and conference services.

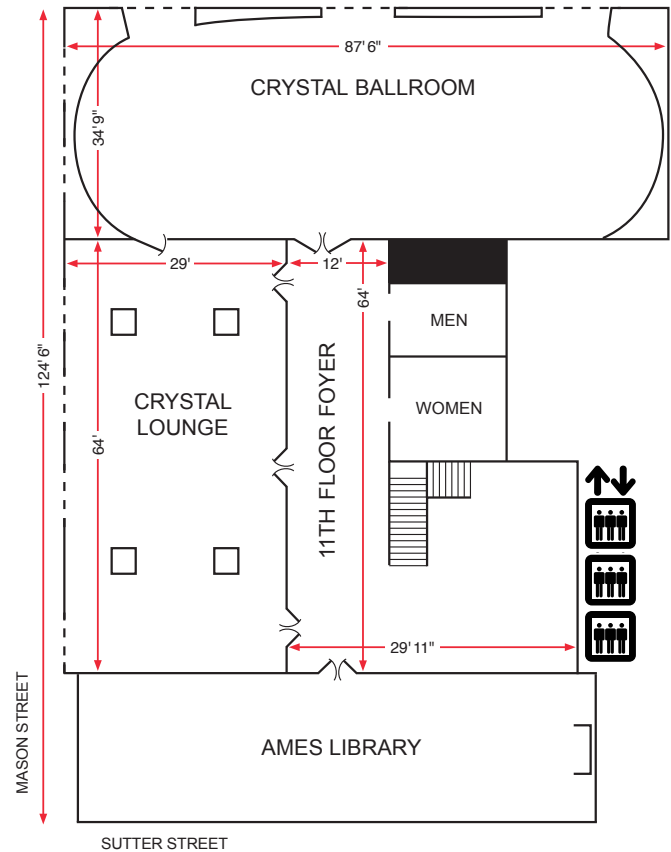
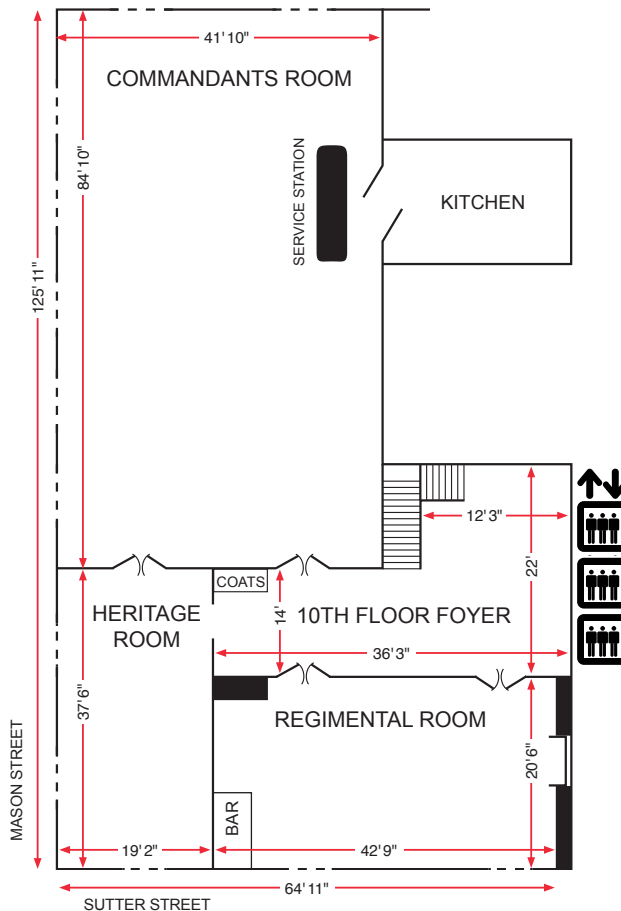
A UNIQUE AND HISTORIC SAN FRANCISCO LOCATION. AN EXTRAORDINARY PLACE TO MEET.



All major meeting spaces have 16'-22' ceilings, abundant natural light, spacious foyers, and views of Nob Hill or downtown San Francisco. High-speed Internet is provided, as well as audio visual equipment rental. The historic 564-seat **Marines' Memorial Theatre** (415.447.0188) is available as a venue for educational, corporate, civic and celebratory events, and offers full stage production services.

TENTH FLOOR	REGIMENTAL	HERITAGE	COMMANDANTS
Room Dimensions	20' 6" x 42' 9"	19' 2" x 37' 6"	41' 10" x 84' 10"
Square Footage	884	722	3,456
Ceiling Height	22'	19'	20'
Banquet	60	50	330
Reception	85	75	350
Classroom	48	44	210
Theater	60	55	300

ELEVENTH FLOOR	BALLROOM	LOUNGE
Room Dimensions	34' 9" x 87' 6"	29' x 64'
Square Footage	3,057	1,856
Ceiling Height	17'	18'
Banquet	250	120
Reception	300	170
Classroom (18" tables)	152	64
Theater	216	100



MARINES' MEMORIAL CLUB & HOTEL

UNION SQUARE · SAN FRANCISCO · WWW.MARINESMEMORIAL.ORG

The Marines' Memorial Club is the flagship for the Marines' Memorial Association, a non-profit 501(c)(19) Veterans organization, and the Marines' Memorial Foundation, a 501(c)(3) organization. The Marines' Memorial honors the legacy of military service through its living memorial and programs that commemorate, educate, and serve.

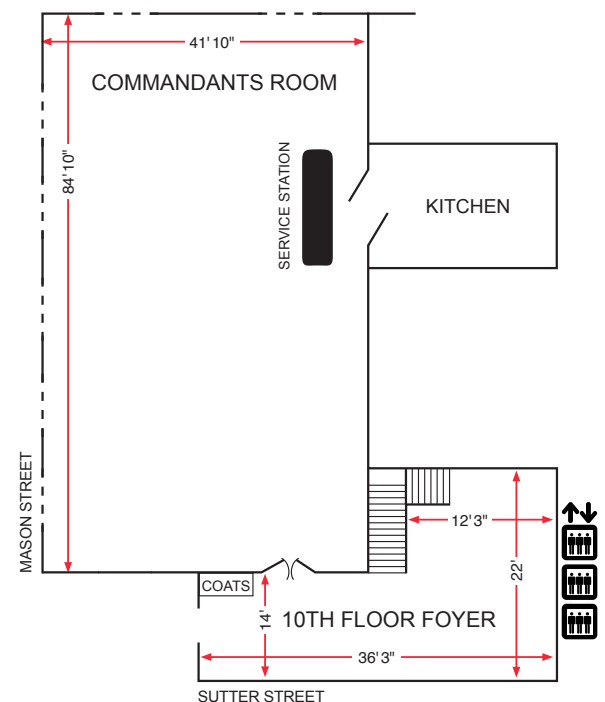
THE COMMANDANTS ROOM



The elegant, sophisticated Commandants Ballroom on the tenth floor provides an opulent atmosphere for functions of up to three hundred and fifty people. Its twenty-foot ceiling, iron chandeliers and wall sconces in lavishly gilded alcoves, accentuate the elaborate murals and gold leaf stencil work of the walls and ceiling. The Commandants Ballroom connects to the Heritage Room and, along with the adjacent foyer and Regimental Room, is often combined to accommodate receptions for up to five hundred people.

High-speed Internet is provided, as well as audiovisual equipment rental.

Commandants Ballroom Capacity Chart & Floor Plan	Room Dimensions	41' 10" x 84' 10"
	Square Footage	3,456
	Ceiling Height	20'
	Banquet	330
	Reception	350
	Classroom	210
	Theater	300



MARINES' MEMORIAL CLUB & HOTEL
 UNION SQUARE · SAN FRANCISCO · WWW.MARINESMEMORIAL.ORG

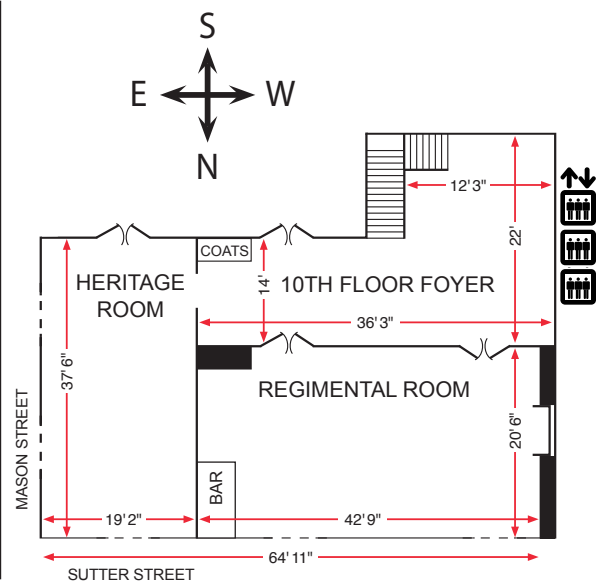
THE HERITAGE ROOM

THE REGIMENTAL ROOM

These smaller tenth floor meeting rooms are ideal for groups of up to 85 people. The cozy stone fireplace in the Tudor style Regimental Room provides an intimate atmosphere, while guests delight in splendid views of Nob Hill and the Bay from the Victorian style Heritage Room. The Heritage and Regimental Rooms are adjacent to the Commandants Ballroom and are often used in tandem for exhibits (housing up to 15 tabletops), as well as coffee breaks and receptions. The 10th Floor Foyer is ideal as a registration area. High-speed Internet is provided, as well as audiovisual equipment rental.



Heritage and Regimental Rooms Capacity Charts & Floor Plans		REGIMENTAL	HERITAGE
	Room Dimensions	20' 6" x 42' 9"	19' 2" x 37' 6"
	Square Footage	884	722
	Ceiling Height	22'	19'
	Banquet	60	50
	Reception	85	75
	Classroom	48	44
	Theater	60	55



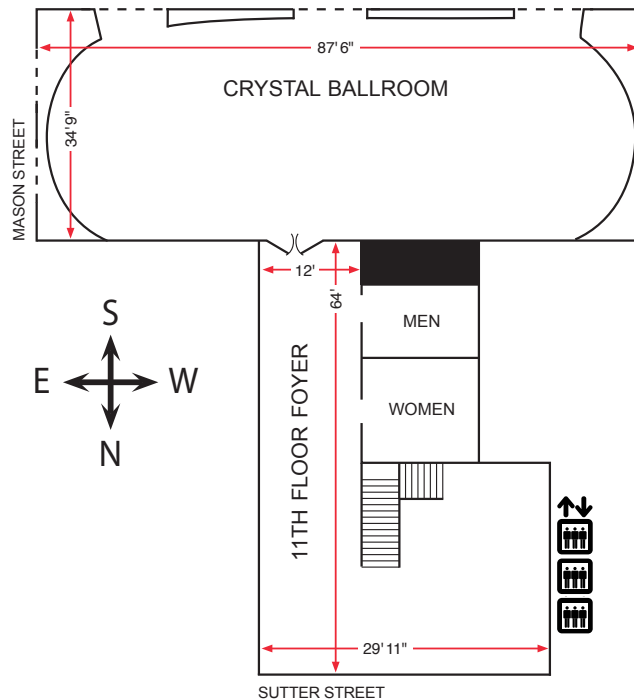
MARINES' MEMORIAL CLUB & HOTEL
 UNION SQUARE · SAN FRANCISCO · WWW.MARINESMEMORIAL.ORG

THE CRYSTAL BALLROOM

The magnificent Crystal Ballroom, on the eleventh floor of the Marines' Memorial Club & Hotel, exudes old San Francisco charm. Original crystal chandeliers showcase the intricate gold leaf patterns and classic plaster medallions that are a focal point in this very elegant ballroom. The Crystal Ballroom is ideal for dances, receptions, symposiums and lectures. This room is appropriate for even the most formal occasions for groups of up to 300 people. High-speed Internet is provided, as well as audiovisual equipment rental.



Crystal Ballroom Capacity Chart & Floor Plan	Room Dimensions	34' 9" x 87' 6"
	Square Footage	3,057
	Ceiling Height	17'
	Banquet	250
	Reception	300
	Classroom (18" tables)	152
	Theater	216



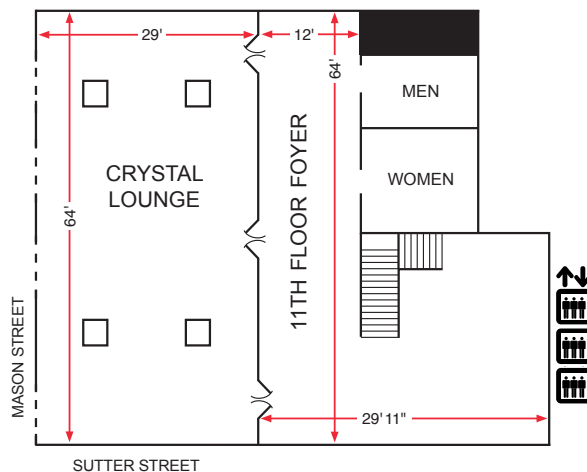
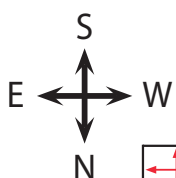
MARINES' MEMORIAL CLUB & HOTEL
UNION SQUARE · SAN FRANCISCO · WWW.MARINESMEMORIAL.ORG

THE CRYSTAL LOUNGE

The Crystal Lounge provides an intimate setting for smaller groups, with its glowing crystal chandeliers and sconces, and a view of the San Francisco Bay. Guests often reserve it in tandem with the Crystal Ballroom for larger events, or by itself for private meetings or receptions. The Crystal Lounge accommodates up to 170 people. High-speed Internet is provided, as well as audiovisual equipment rental.



Crystal Lounge Capacity Chart & Floor Plan	Room Dimensions	29' x 64'
	Square Footage	1,856
	Ceiling Height	18'
	Banquet	120
	Reception	170
	Classroom (18" tables)	64
	Theater	100



MARINES' MEMORIAL CLUB & HOTEL
 UNION SQUARE · SAN FRANCISCO · WWW.MARINESMEMORIAL.ORG